



The Residences AT SOUTH HATCH

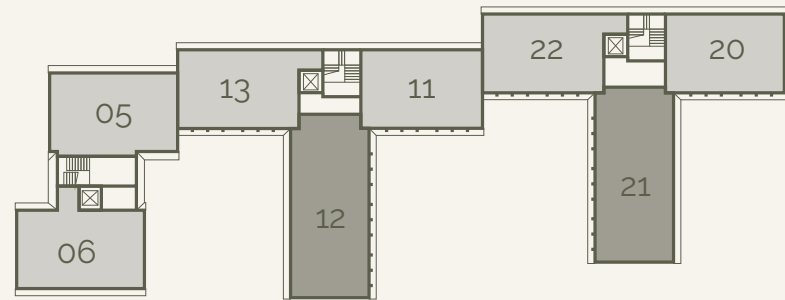
The Residences

AT SOUTH HATCH

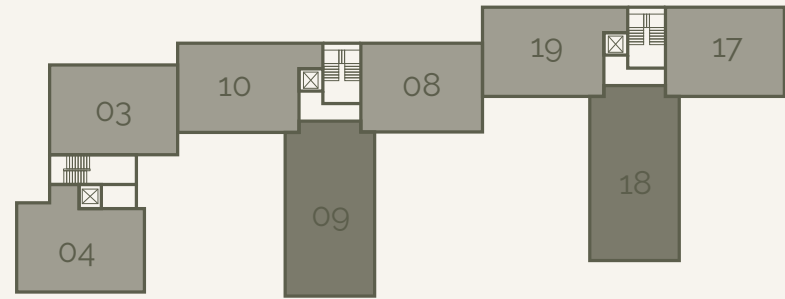


The Residences at South Hatch
Block A

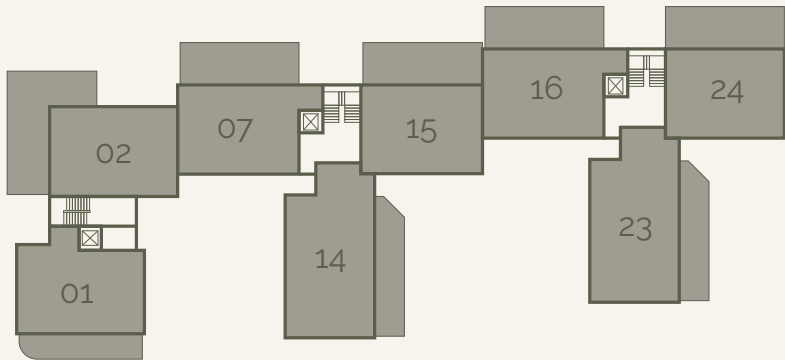
Second Floor



First Floor

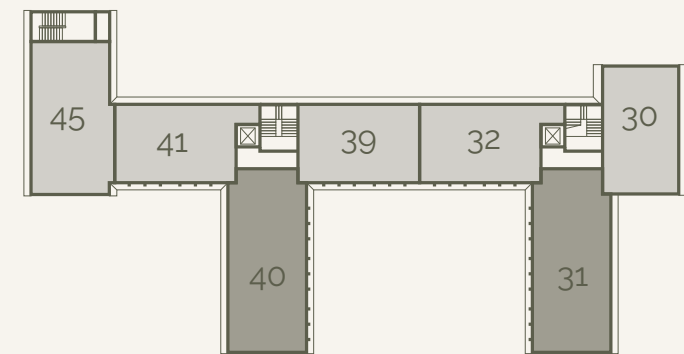


Ground Floor

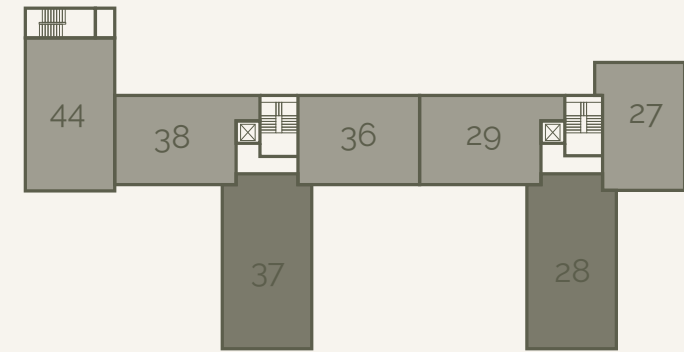


The Residences at South Hatch
Block B

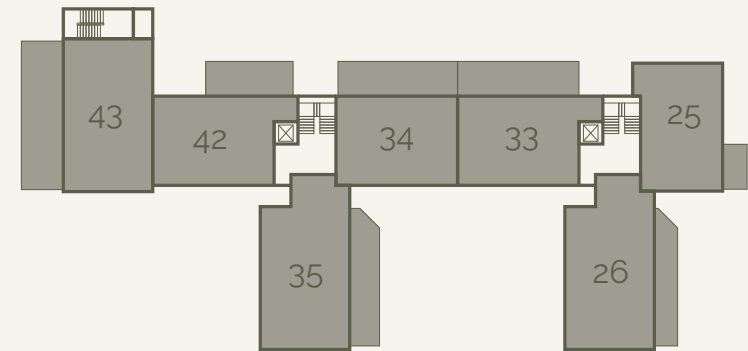
Second Floor



First Floor



Ground Floor

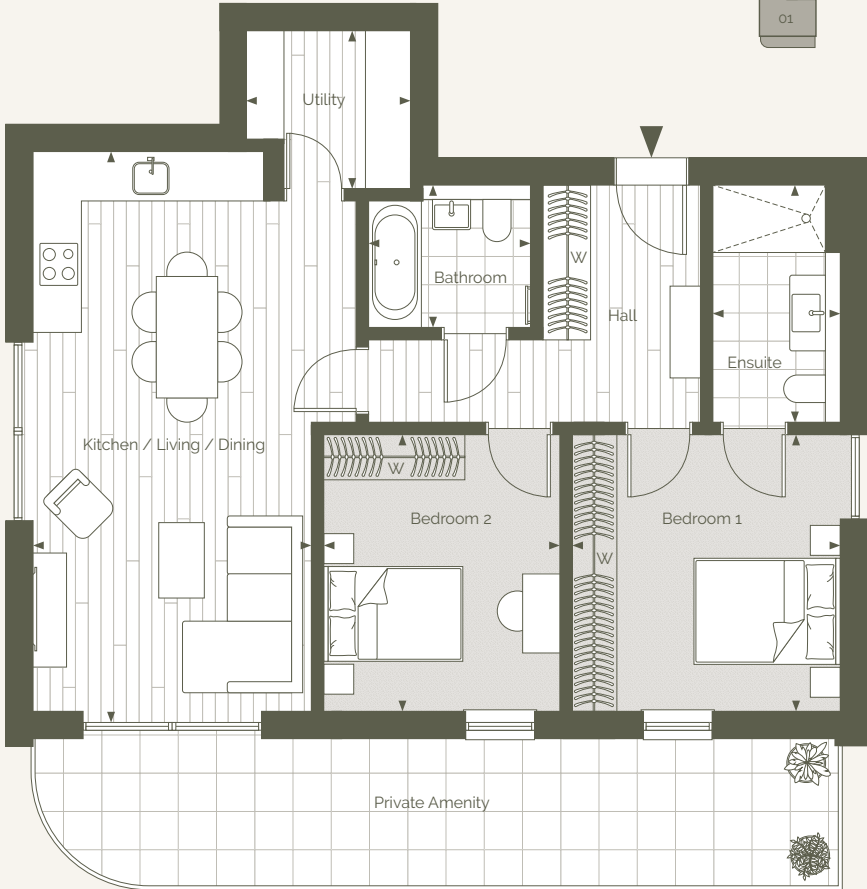


Block A

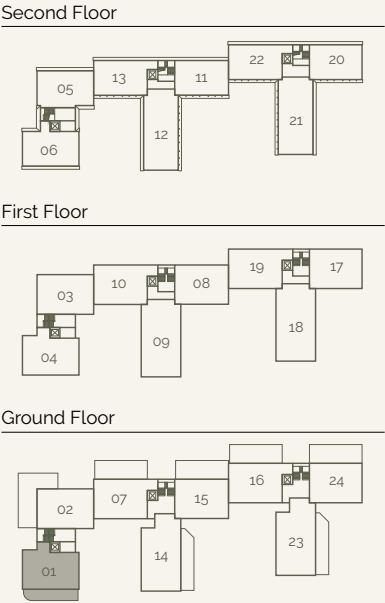
Apartment 01

Two Bedrooms
Ground Floor

Total Area: 80 sq m 861 sq ft



Room Dimensions		
Kitchen / Living / Dining	3.70m x 7.60m	12' 2" x 24' 11"
Bedroom 1	3.60m x 3.70m	11' 10" x 12' 2"
Bedroom 2	3.10m x 3.70m	10' 2" x 12' 2"
Bathroom	2.10m x 1.90m	6' 11" x 6' 3"
Ensuite	1.70m x 3.10m	5' 7" x 10' 2"
Utility	2.20m x 2.70m	7' 3" x 8' 10"

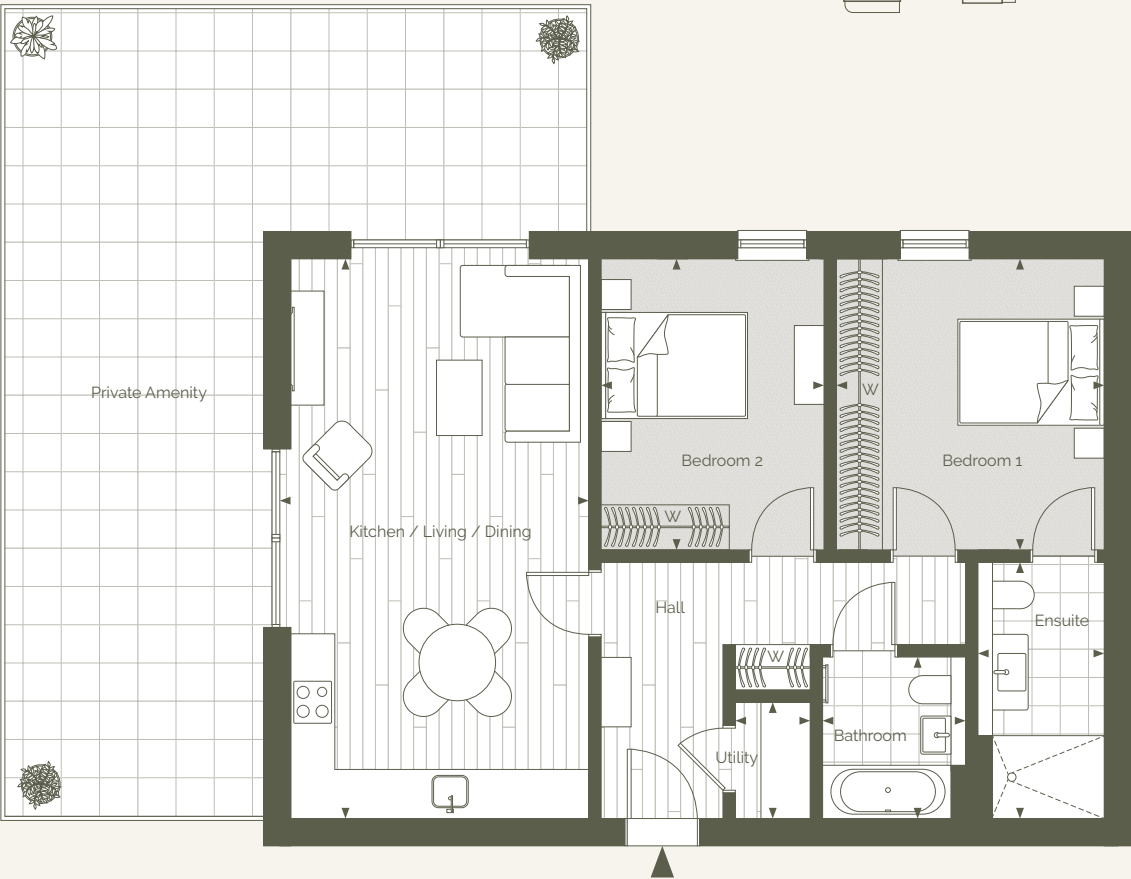


Block A

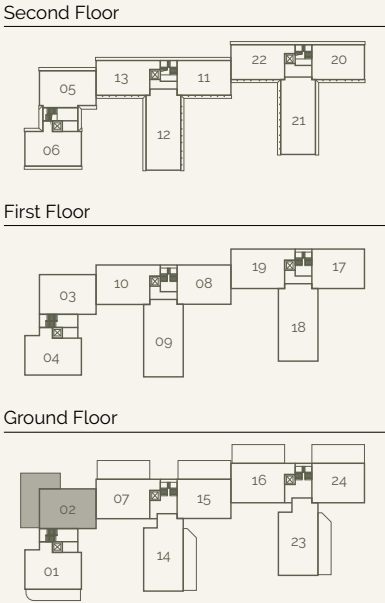
Apartment 02

Two Bedrooms
Ground Floor

Total Area: 80 sq m 861 sq ft



Room Dimensions		
Kitchen / Living / Dining	4.10m x 7.40m	13' 5" x 24' 3"
Bedroom 1	3.60m x 3.90m	11' 10" x 12' 10"
Bedroom 2	3.00m x 3.90m	9' 10" x 12' 10"
Bathroom	1.90m x 2.10m	6' 3" x 6' 11"
Ensuite	1.70m x 3.40m	5' 7" x 11' 2"
Utility	1.00m x 1.50m	3' 3" x 4' 11"

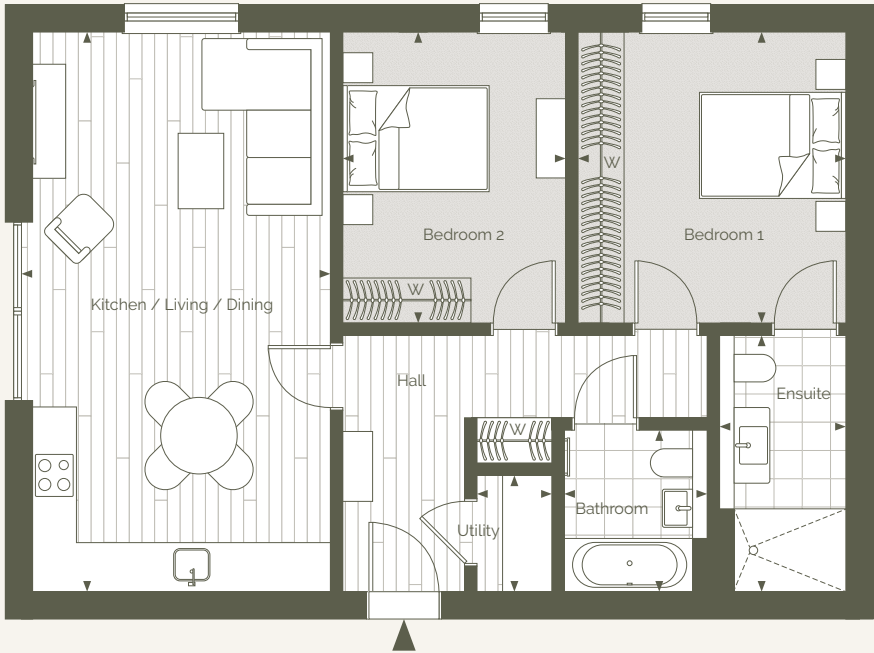
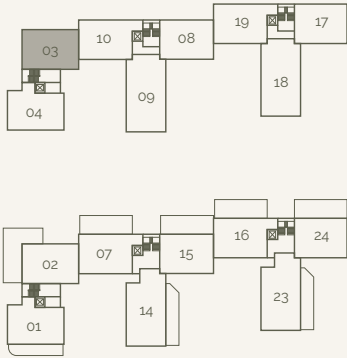


Block A

Apartment 03

Two Bedrooms
First Floor

Total Area: 80 sq m 861 sq ft



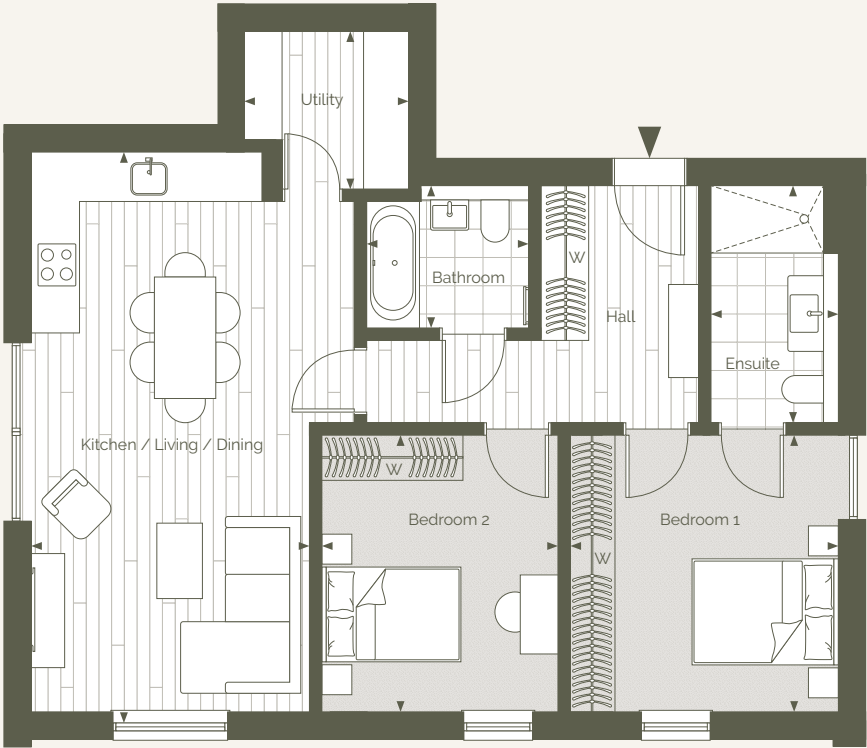
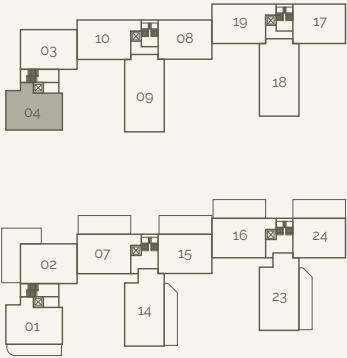
Room Dimensions		
Kitchen / Living / Dining	4.10m x 7.40m	13' 5" x 24' 3"
Bedroom 1	3.60m x 3.90m	11' 10" x 12' 10"
Bedroom 2	3.00m x 3.90m	9' 10" x 12' 10"
Bathroom	1.90m x 2.10m	6' 3" x 6' 11"
Ensuite	1.70m x 3.40m	5' 7" x 11' 2"
Utility	1.00m x 1.50m	3' 3" x 4' 11"

Block A

Apartment 04

Two Bedrooms
First Floor

Total Area: 80 sq m 861 sq ft



Room Dimensions		
Kitchen / Living / Dining	3.70m x 7.60m	12' 2" x 24' 11"
Bedroom 1	3.60m x 3.70m	11' 10" x 12' 2"
Bedroom 2	3.10m x 3.70m	10' 2" x 12' 2"
Bathroom	2.10m x 1.90m	6' 11" x 6' 3"
Ensuite	1.70m x 3.10m	5' 7" x 10' 2"
Utility	2.20m x 2.70m	7' 3" x 8' 10"

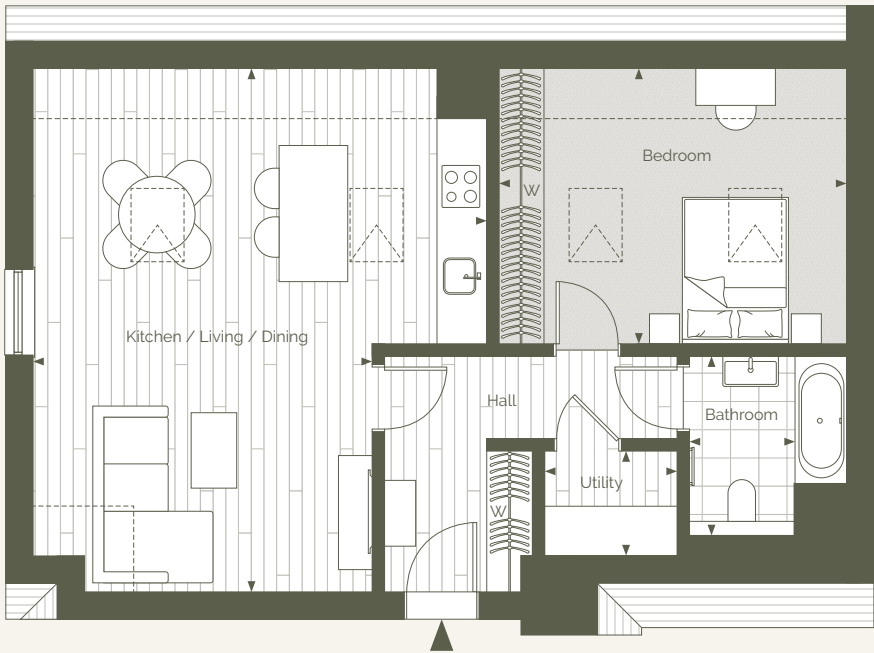
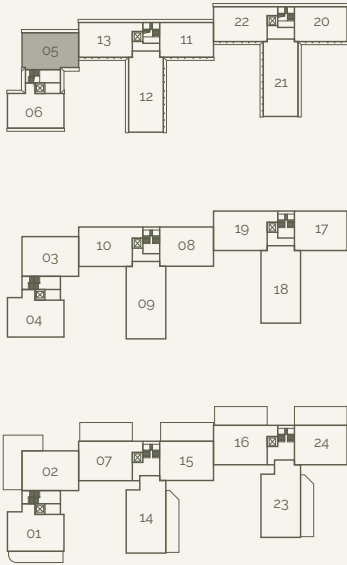
Block A

Apartment 05

One Bedroom

Second Floor

Total Area: 61 sq m 657 sq ft



Room Dimensions		
Kitchen / Living / Dining	4.50m x 6.90m	14' 9" x 22' 8"
Bedroom	4.60m x 3.70m	15' 1" x 12' 2"
Bathroom	1.40m x 2.40m	4' 7" x 7' 10"
Utility	1.80m x 1.40m	5' 11" x 4' 7"

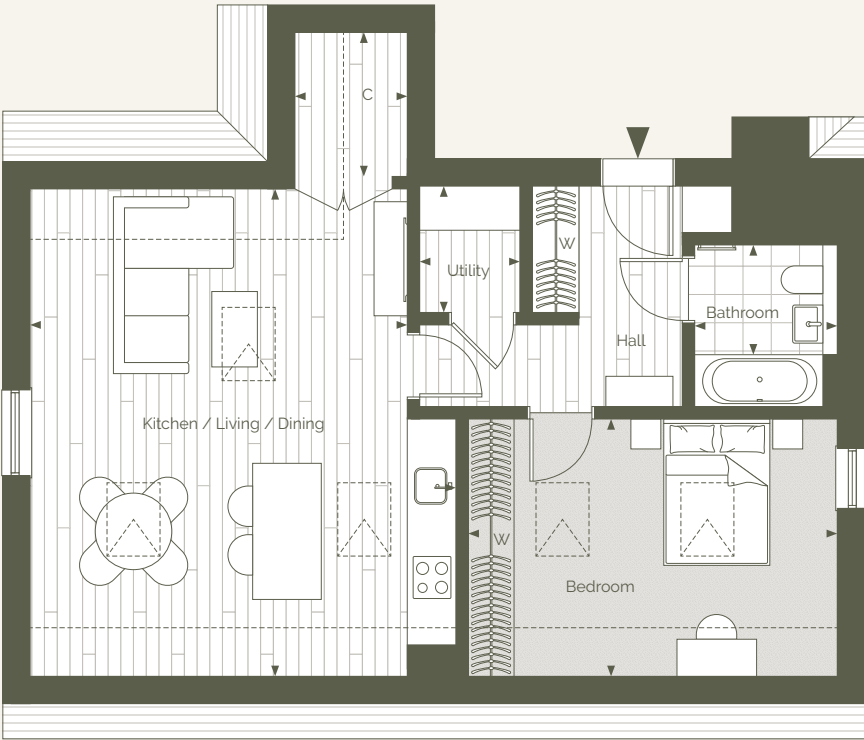
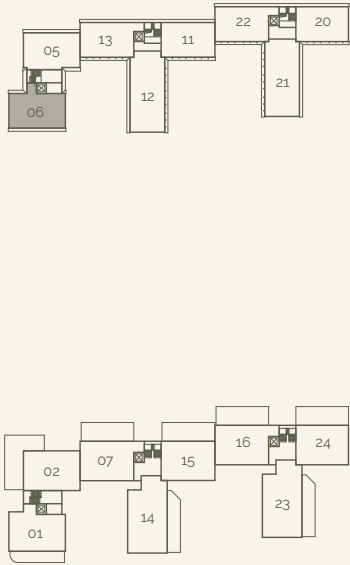
Block A

Apartment 06

One Bedroom

Second Floor

Total Area: 60 sq m 646 sq ft

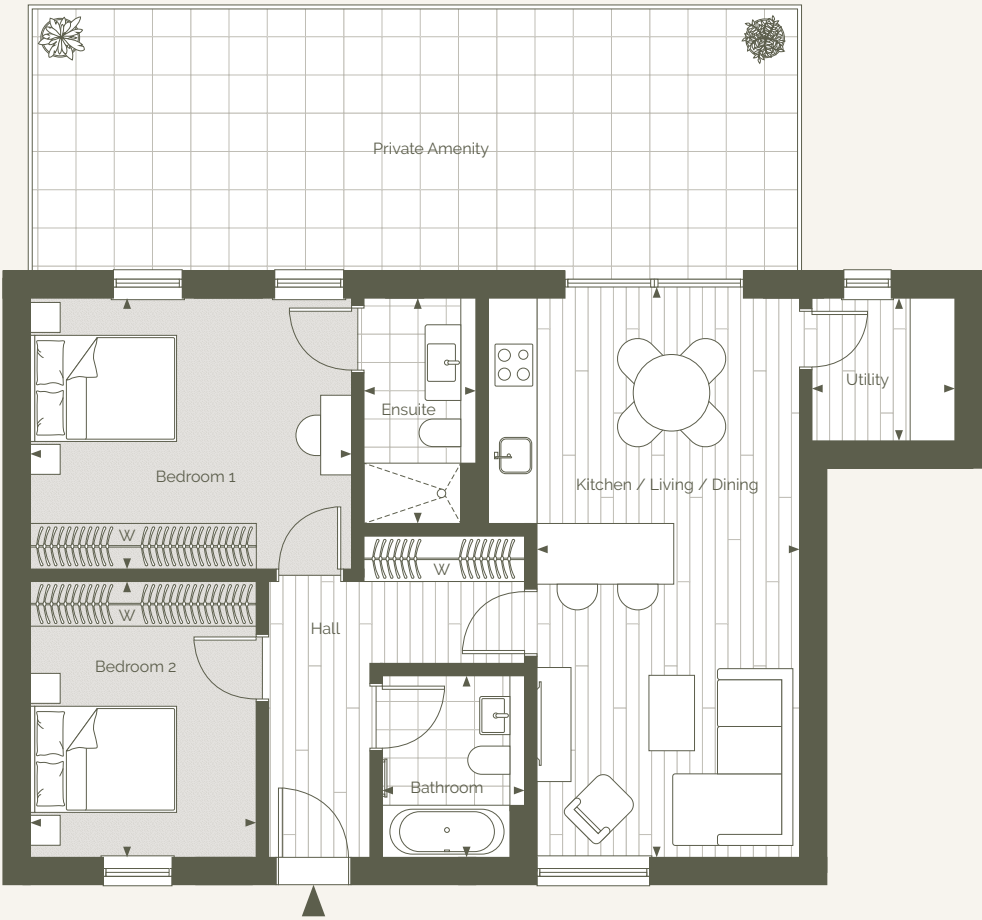


Room Dimensions		
Kitchen / Living / Dining	5.00m x 6.50m	16' 5" x 21' 4"
Bedroom	4.90m x 3.40m	16' 1" x 11' 2"
Bathroom	1.90m x 1.50m	6' 3" x 4' 11"
Utility	1.30m x 1.70m	4' 3" x 5' 7"

Block A & B
Apartments 07, 16, 33 & *42

Two Bedrooms
Ground Floor

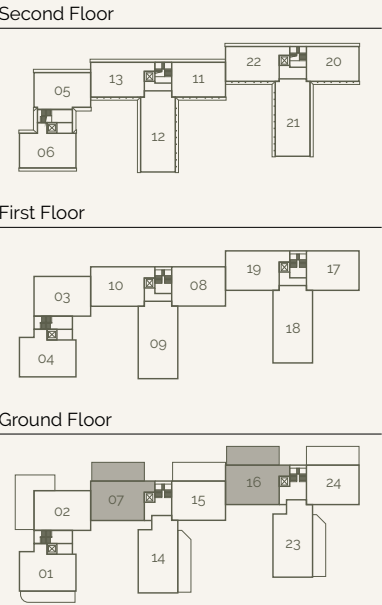
Total Area: 80 sq m 861 sq ft



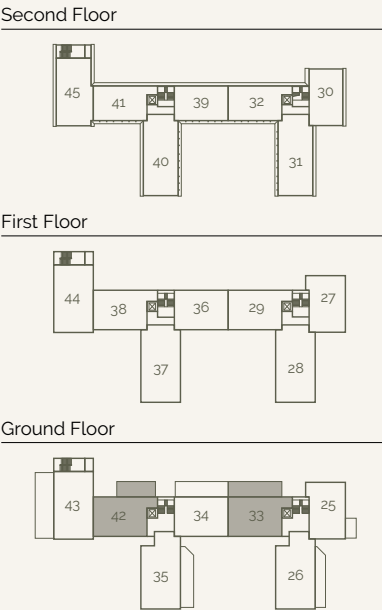
Room Dimensions		
Kitchen / Living / Dining	3.50m x 4.60m	11' 6" x 15' 1"
Bedroom 1	4.30m x 3.60m	14' 1" x 11' 10"
Bedroom 2	3.00m x 3.70m	9' 10" x 12' 2"
Bathroom	1.90m x 2.40m	6' 3" x 7' 10"
Ensuite	1.50m x 3.00m	4' 11" x 9' 10"
Utility	1.90m x 1.90m	6' 3" x 6' 3"

*Apartment 42 has a different Private Amenity layout

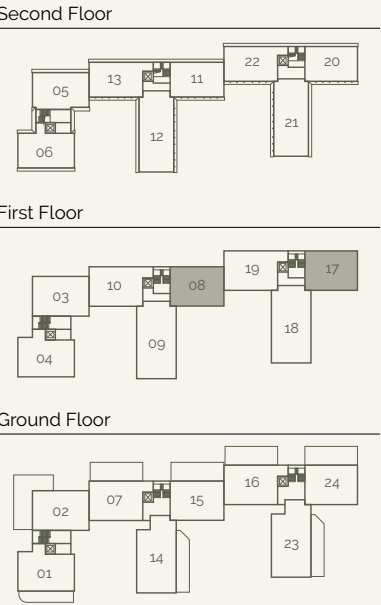
Block A Key Plans



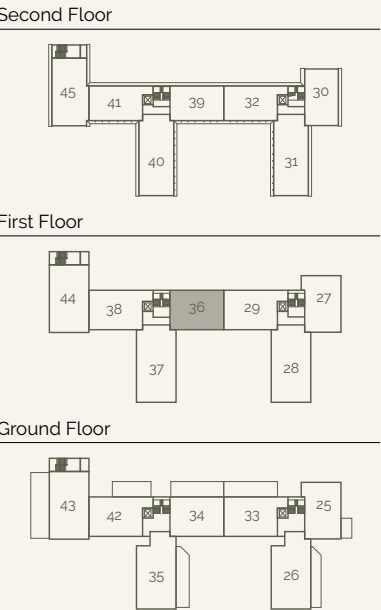
Block B Key Plans



Block A Key Plans



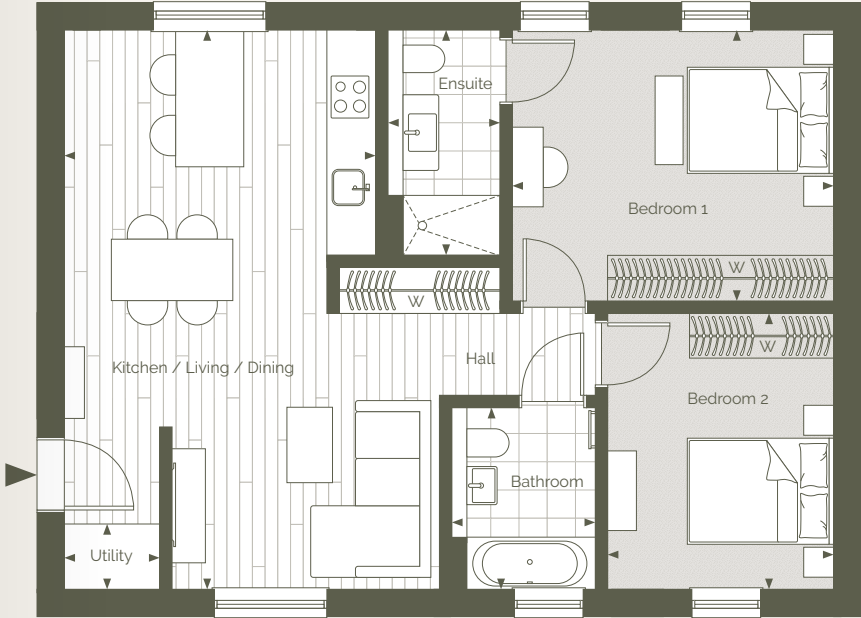
Block B Key Plans



Block A & B
Apartment 08, 17 & 36

Two Bedrooms
First Floor

Total Area: 76 sq m 818 sq ft



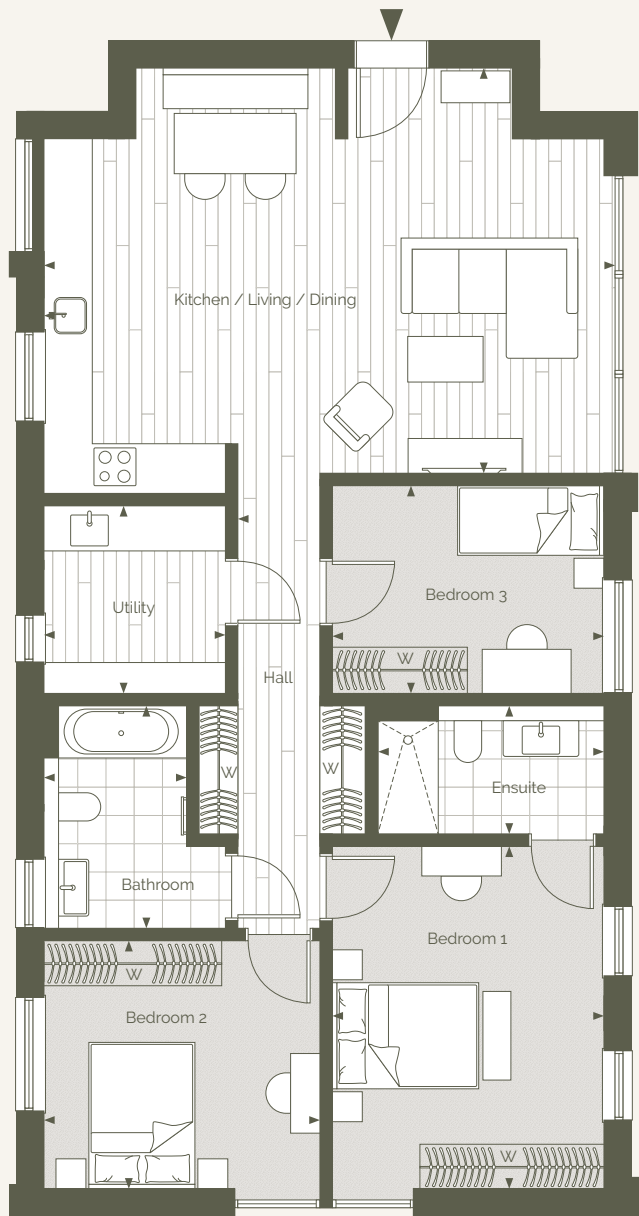
Room Dimensions		
Kitchen / Living / Dining	4.20m x 7.40m	13' 9" x 24' 3"
Bedroom 1	4.30m x 3.60m	14' 1" x 11' 10"
Bedroom 2	3.00m x 3.70m	9' 10" x 12' 2"
Bathroom	1.90m x 2.40m	6' 3" x 7' 10"
Ensuite	1.50m x 3.00m	4' 11" x 9' 10"
Utility	1.30m x 0.90m	4' 3" x 2' 11"

Blocks A & B

Apartments 09, 18, 28 & 37

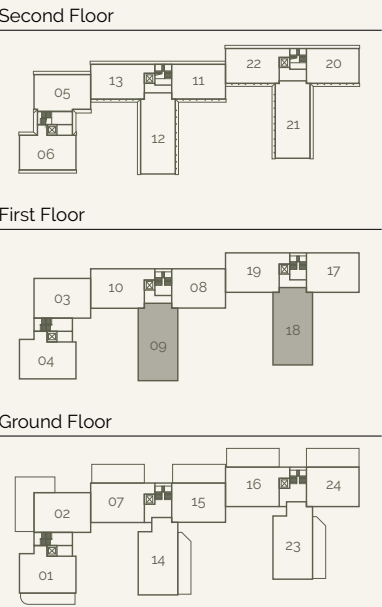
Three Bedrooms
First Floor

Total Area: 108 sq m 1162 sq ft

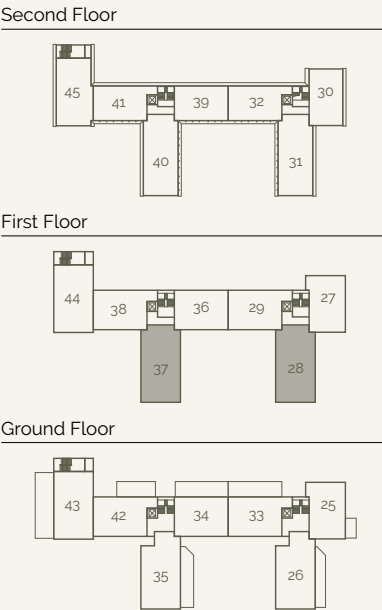


Room Dimensions		
Kitchen / Living / Dining	7.60m x 5.40m	24' 11" x 17' 9"
Bedroom 1	3.60m x 4.60m	11' 10" x 15' 1"
Bedroom 2	3.70m x 3.30m	12' 2" x 10' 10"
Bedroom 3	3.60m x 2.80m	11' 10" x 9' 2"
Bathroom	1.90m x 3.00m	6' 3" x 9' 10"
Ensuite	3.00m x 1.70m	9' 10" x 5' 7"
Utility	2.40m x 2.50m	7' 10" x 8' 2"

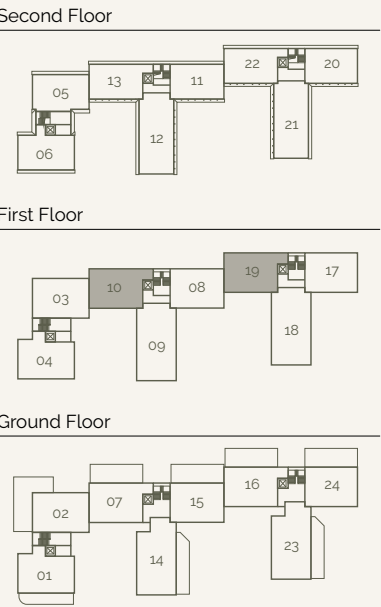
Block A Key Plans



Block B Key Plans



Block A Key Plans

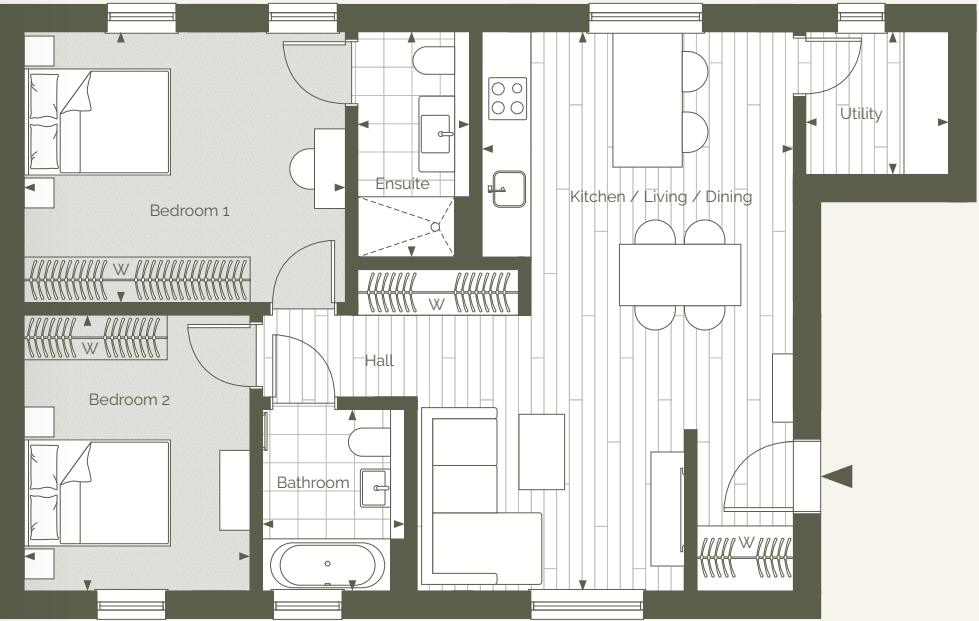


Blocks A & B

Apartments 10, 19, 29 & 38

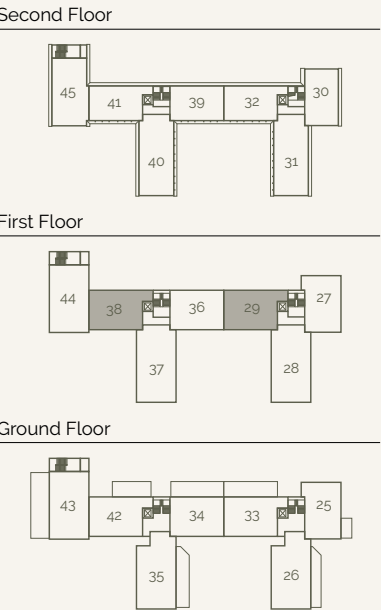
Two Bedrooms
First Floor

Total Area: 80 sq m 861 sq ft



Room Dimensions		
Kitchen / Living / Dining	4.20m x 7.40m	13' 9" x 24' 3"
Bedroom 1	4.30m x 3.60m	14' 1" x 11' 10"
Bedroom 2	3.00m x 3.70m	9' 10" x 12' 2"
Bathroom	1.90m x 2.40m	6' 3" x 7' 10"
Ensuite	1.50m x 3.00m	4' 11" x 9' 10"
Utility	1.90m x 1.90m	6' 3" x 6' 3"

Block B Key Plans

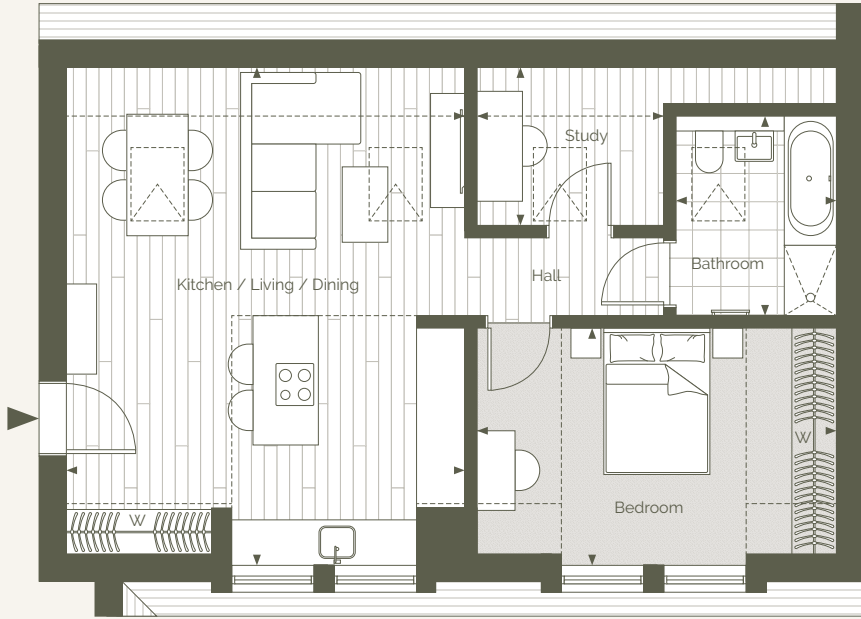


Blocks A & B

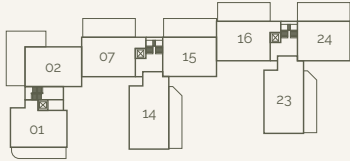
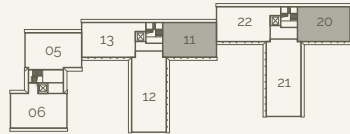
Apartment 11, 20 & 39

One Bedrooms
Second Floor

Total Area: 56 sq m 603 sq ft

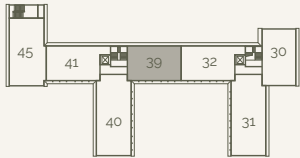


Room Dimensions		
Kitchen / Living / Dining	5.30m x 6.60m	17' 5" x 21' 8"
Bedroom	4.80m x 3.10m	15' 9" x 10' 2"
Bathroom	2.20m x 2.70m	7' 3" x 8' 10"
Study	2.50m x 2.10m	8' 2" x 6' 11"

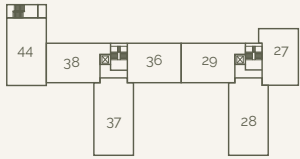


Block B Key Plans

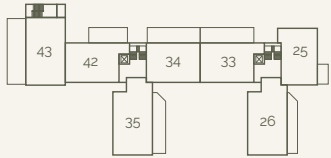
Second Floor



First Floor



Ground Floor

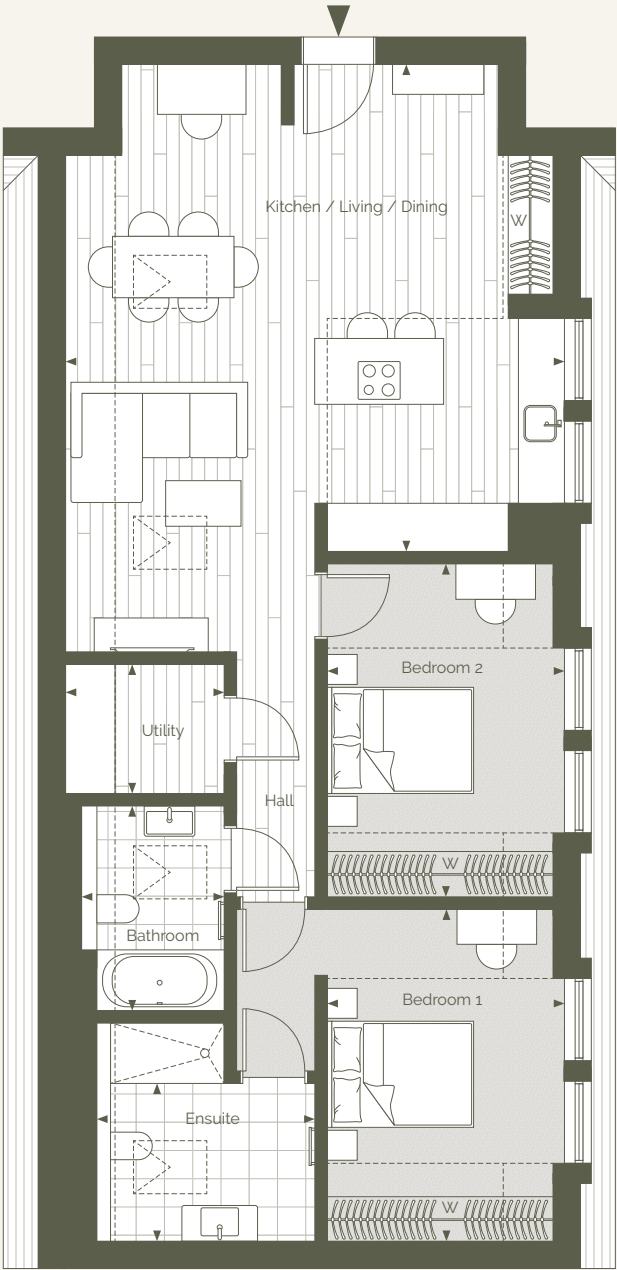


Blocks A & B

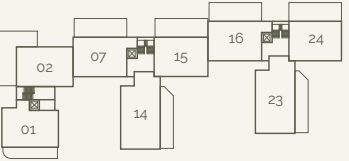
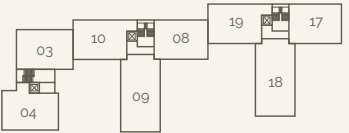
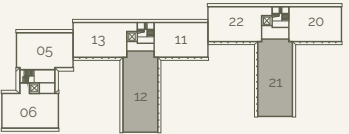
Apartment 12, 21, 31 & 40

Two Bedrooms
Second Floor

Total Area: 86 sq m 926 sq ft

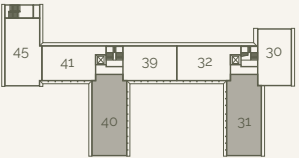


Room Dimensions		
Kitchen / Living / Dining	6.60m x 6.50m	21' 8" x 21' 4"
Bedroom 1	3.20m x 4.40m	10' 6" x 14' 5"
Bedroom 2	3.20m x 4.40m	10' 6" x 14' 5"
Bathroom	1.90m x 2.70m	6' 3" x 8' 10"
Ensuite	2.90m x 2.10m	9' 6" x 6' 11"
Utility	2.10m x 1.70m	6' 11" x 5' 7"

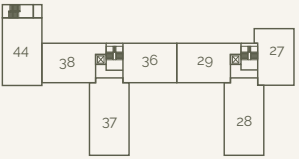


Block B Key Plans

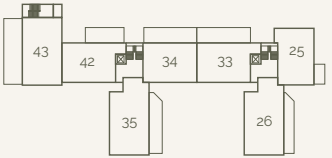
Second Floor



First Floor



Ground Floor

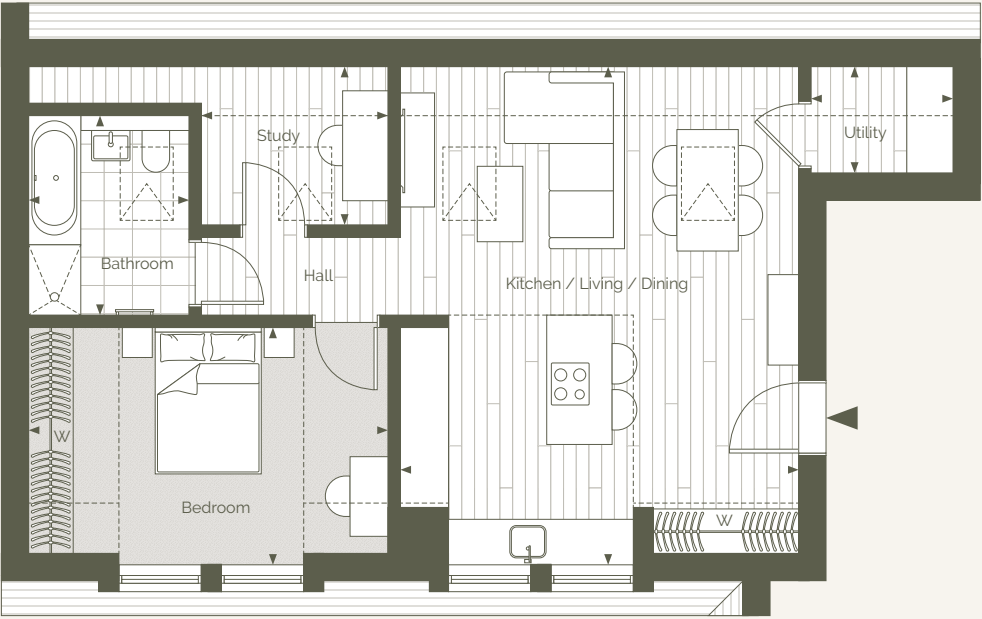


Blocks A & B

Apartments 13, 22, 32 & 41

One Bedroom
Second Floor

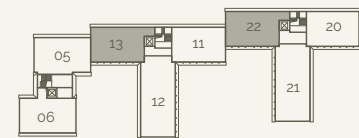
Total Area: 58 sq m 624 sq ft



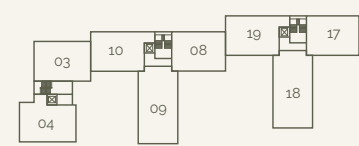
Room Dimensions		
Kitchen / Living / Dining	5.30m x 6.60m	17' 5" x 21' 8"
Bedroom	4.80m x 3.10m	15' 9" x 10' 2"
Bathroom	2.20m x 2.70m	7' 3" x 8' 10"
Study	2.50m x 2.10m	8' 2" x 6' 11"
Utility	1.90m x 1.40m	6' 3" x 4' 7"

Block A Key Plans

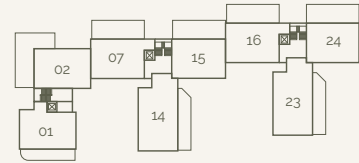
Second Floor



First Floor

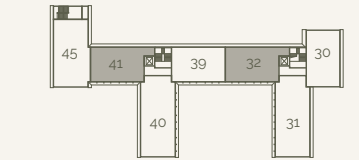


Ground Floor

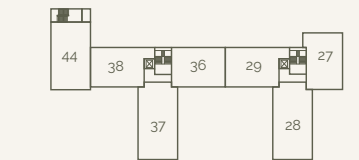


Block B Key Plans

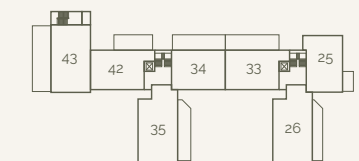
Second Floor



First Floor

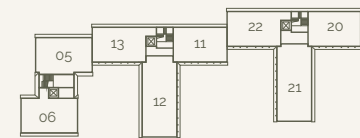


Ground Floor

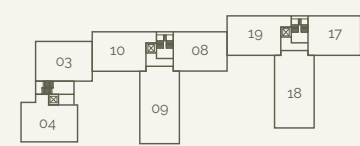


Block A Key Plans

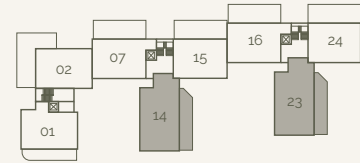
Second Floor



First Floor

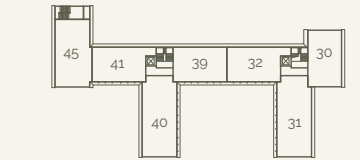


Ground Floor

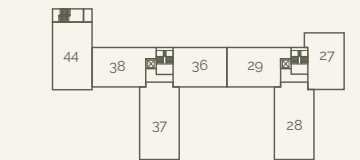


Block B Key Plans

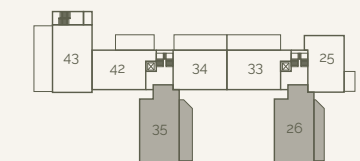
Second Floor



First Floor



Ground Floor

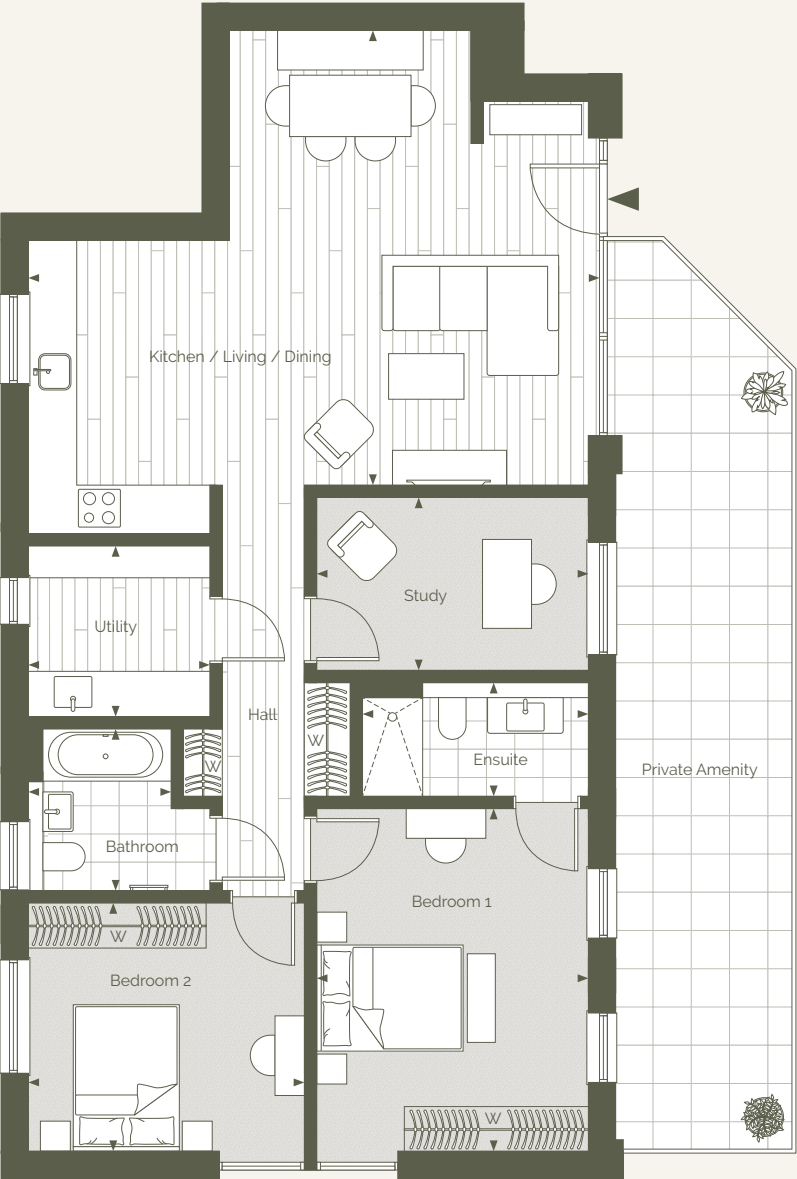


Blocks A & B

Apartment 14, 23, 26 & 35

Two Bedrooms
Ground Floor

Total Area: 102 sq m 1098 sq ft



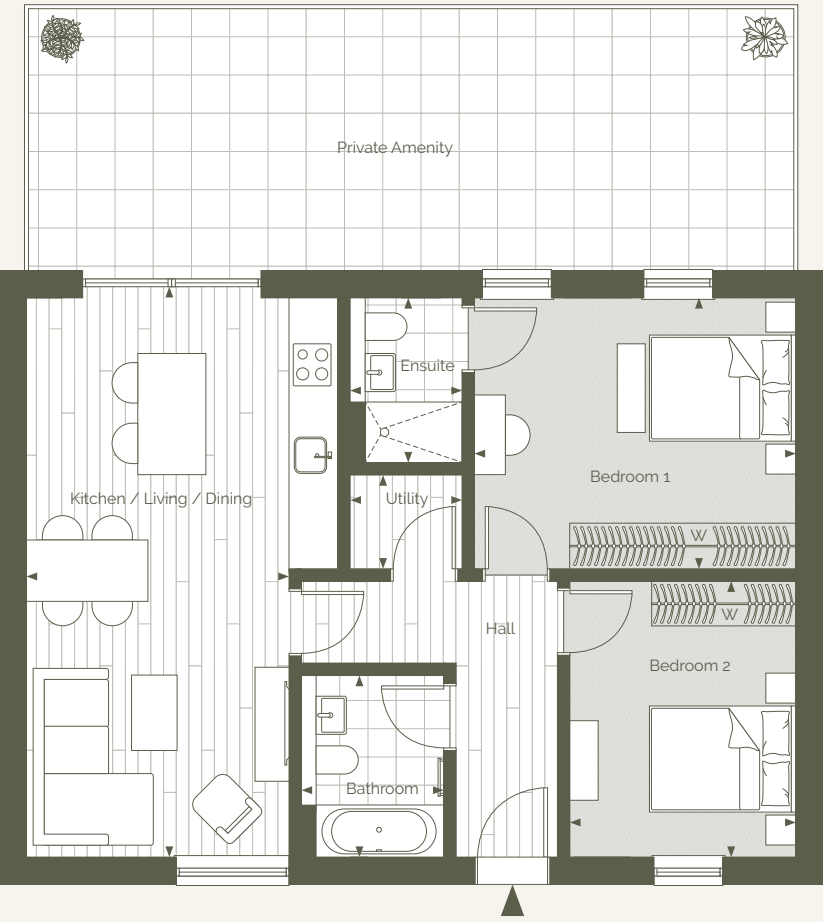
Room Dimensions		
Kitchen / Living / Dining	7.60m x 6.00m	24' 11" x 19' 8"
Bedroom 1	3.60m x 0.60m	11' 10" x 1' 12"
Bedroom 2	3.70m x 3.30m	12' 2" x 10' 10"
Study	3.60m x 2.30m	11' 10" x 7' 7"
Bathroom	1.90m x 2.20m	6' 3" x 7' 3"
Ensuite	3.00m x 1.50m	9' 10" x 4' 11"
Utility	2.40m x 2.30m	7' 10" x 7' 7"

Blocks A & B

Apartments 15, 24 & 34

Two Bedroom
Ground Floor

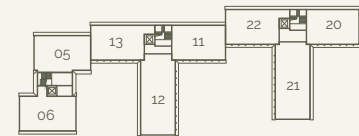
Total Area: 76 sq m 818 sq ft



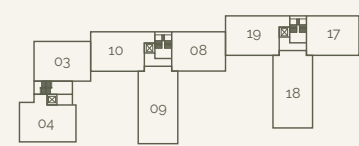
Room Dimensions		
Kitchen / Living / Dining	3.50m x 7.60m	11' 6" x 24' 11"
Bedroom 1	4.30m x 3.60m	14' 1" x 11' 10"
Bedroom 2	3.00m x 3.70m	9' 10" x 12' 2"
Bathroom	1.90m x 2.40m	6' 3" x 7' 10"
Ensuite	1.50m x 2.20m	4' 11" x 7' 3"
Utility	1.50m x 1.30m	4' 11" x 4' 3"

Block A Key Plans

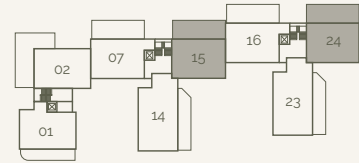
Second Floor



First Floor

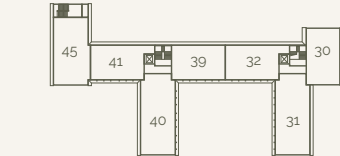


Ground Floor

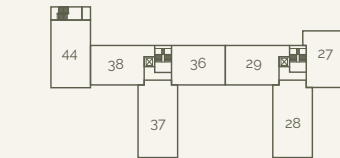


Block B Key Plans

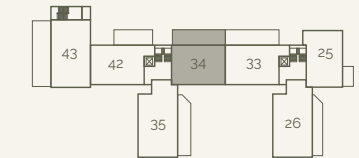
Second Floor



First Floor



Ground Floor

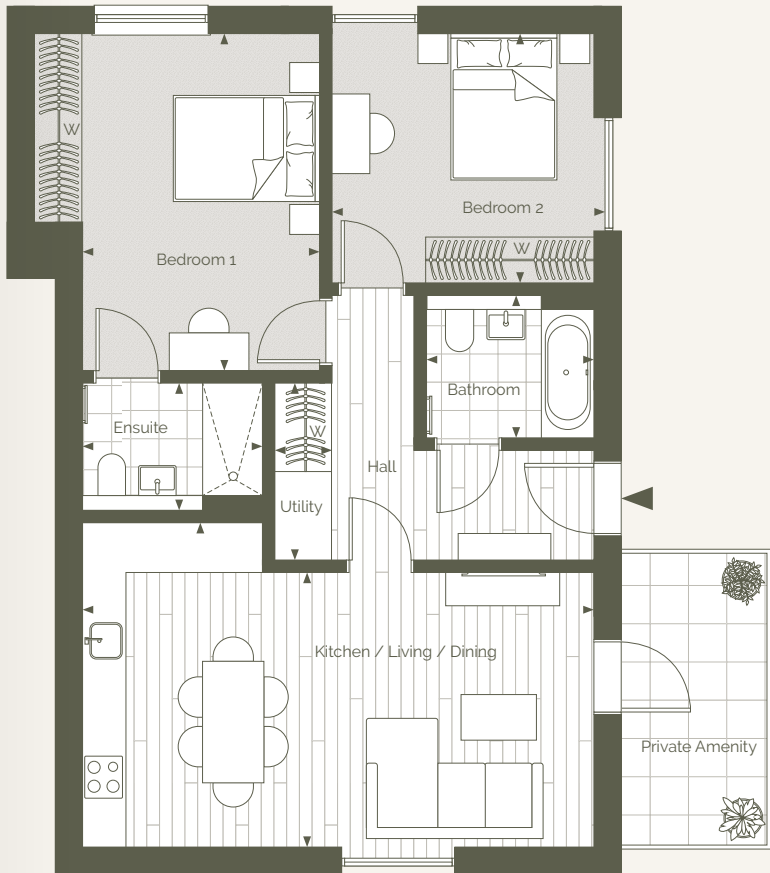


Block B

Apartment 25

Two Bedrooms
Ground Floor

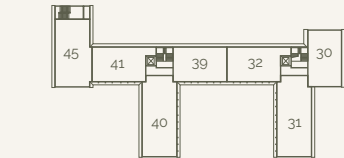
Total Area: 75 sq m 807 sq ft



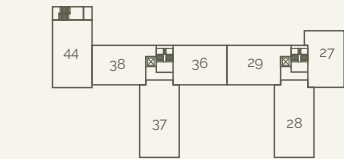
Room Dimensions		
Kitchen / Living / Dining	6.80m x 3.60m	22' 4" x 11' 10"
Bedroom 1	3.20m x 4.50m	10' 6" x 14' 9"
Bedroom 2	3.60m x 3.30m	11' 10" x 10' 10"
Bathroom	2.20m x 1.90m	7' 3" x 6' 3"
Ensuite	2.40m x 1.70m	7' 10" x 5' 7"
Utility	0.80m x 2.30m	2' 7" x 7' 7"

Block A Key Plans

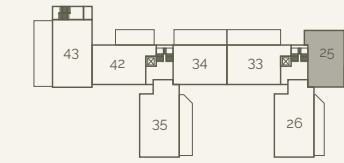
Second Floor



First Floor



Ground Floor

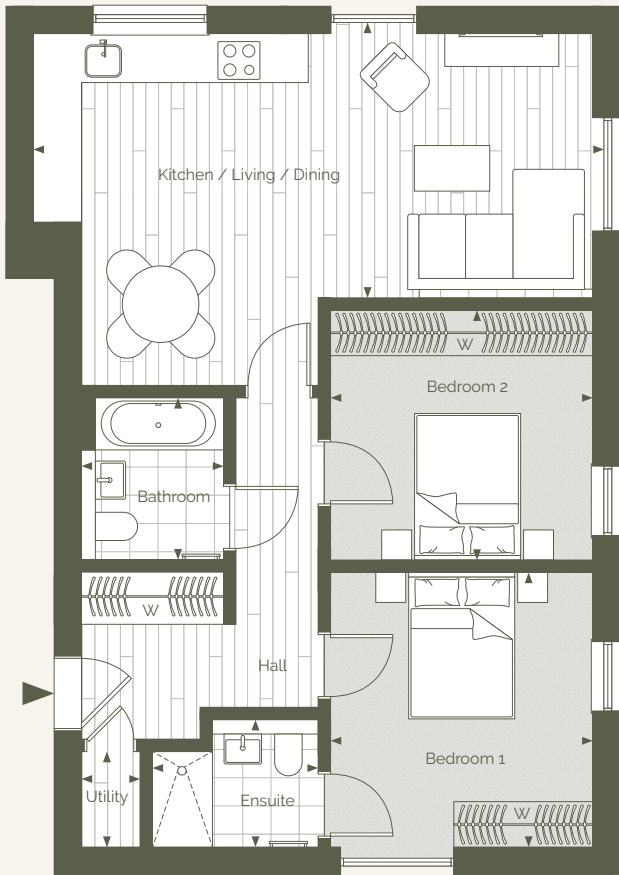


Block B

Apartment 27

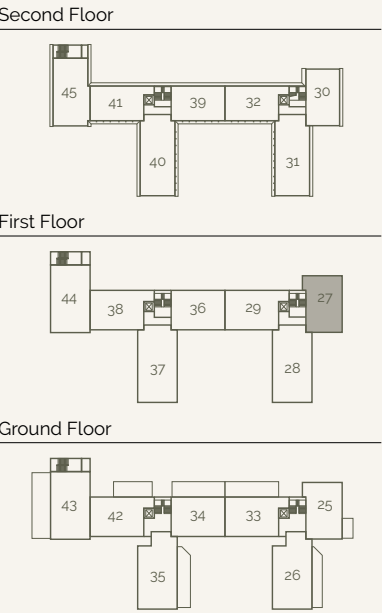
Two Bedrooms
First Floor

Total Area: 75 sq m 807 sq ft



Room Dimensions		
Kitchen / Living / Dining	7.60m x 3.60m	24' 11" x 11' 10"
Bedroom 1	3.50m x 3.60m	11' 6" x 11' 10"
Bedroom 2	3.50m x 3.30m	11' 6" x 10' 10"
Bathroom	1.90m x 2.20m	6' 3" x 7' 3"
Ensuite	2.20m x 1.70m	7' 3" x 5' 7"
Utility	0.80m x 1.30m	2' 7" x 4' 3"

Block B Key Plans

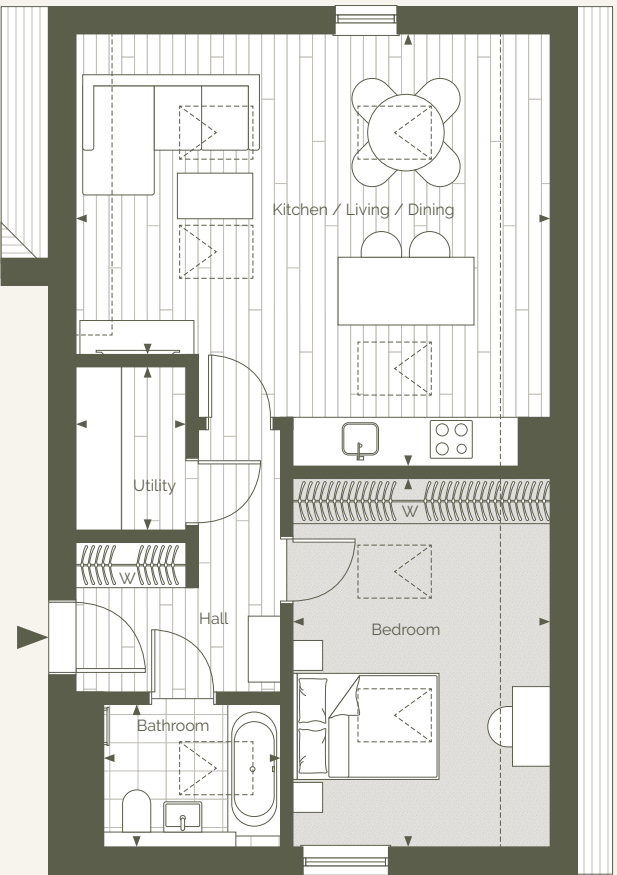


Block B

Apartment 30

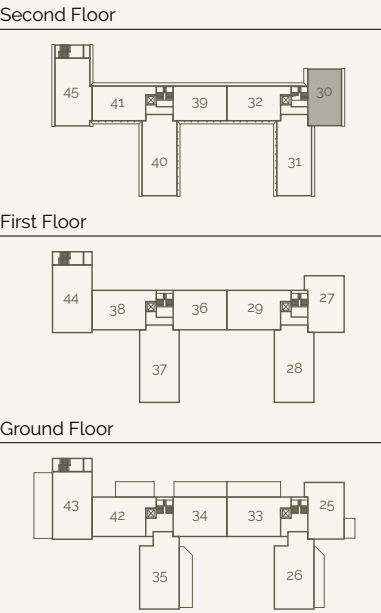
One Bedroom
Second Floor

Total Area: 58 sq m 624 sq ft



Room Dimensions		
Kitchen / Living / Dining	6.30m x 4.30m	20' 8" x 14' 1"
Bedroom	3.40m x 4.90m	11' 2" x 16' 1"
Bathroom	2.30m x 1.90m	7' 7" x 6' 3"
Utility	1.50m x 2.20m	4' 11" x 7' 3"

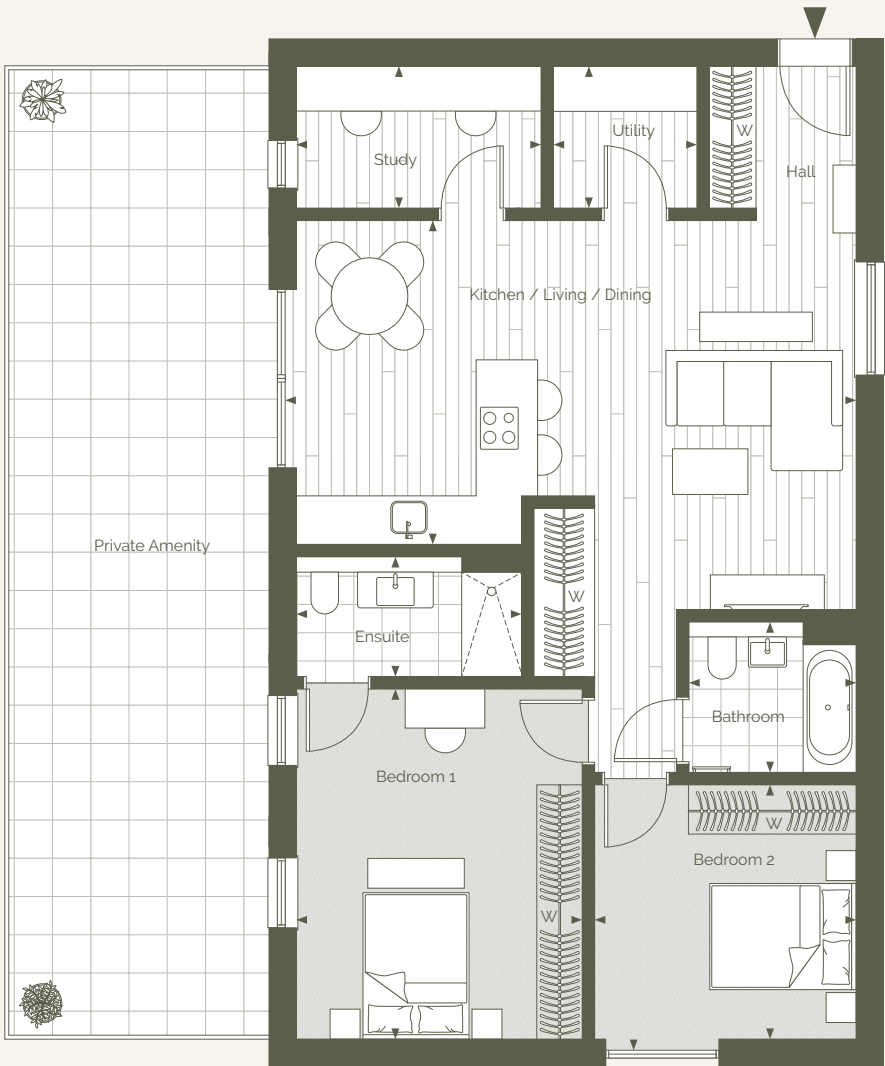
Block A Key Plans



Block B
Apartment 43

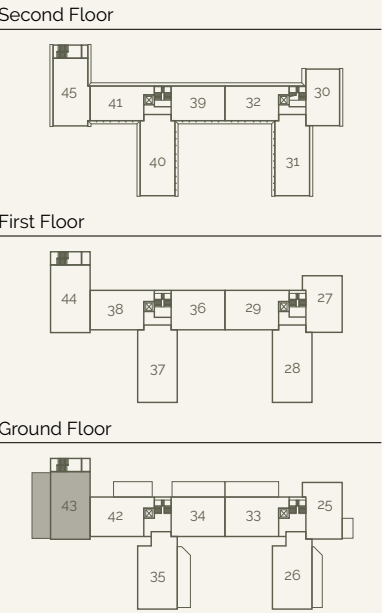
Two Bedrooms
Ground Floor

Total Area: 99 sq m 1066 sq ft



Room Dimensions		
Kitchen / Living / Dining	7.60m x 4.30m	24' 11" x 14' 1"
Bedroom 1	3.80m x 4.60m	12' 6" x 15' 1"
Bedroom 2	3.50m x 3.50m	11' 6" x 11' 6"
Study	3.30m x 1.90m	10' 10" x 6' 3"
Bathroom	2.20m x 2.00m	7' 3" x 6' 7"
Ensuite	3.00m x 1.60m	9' 10" x 5' 3"
Utility	1.90m x 1.90m	6' 3" x 6' 3"

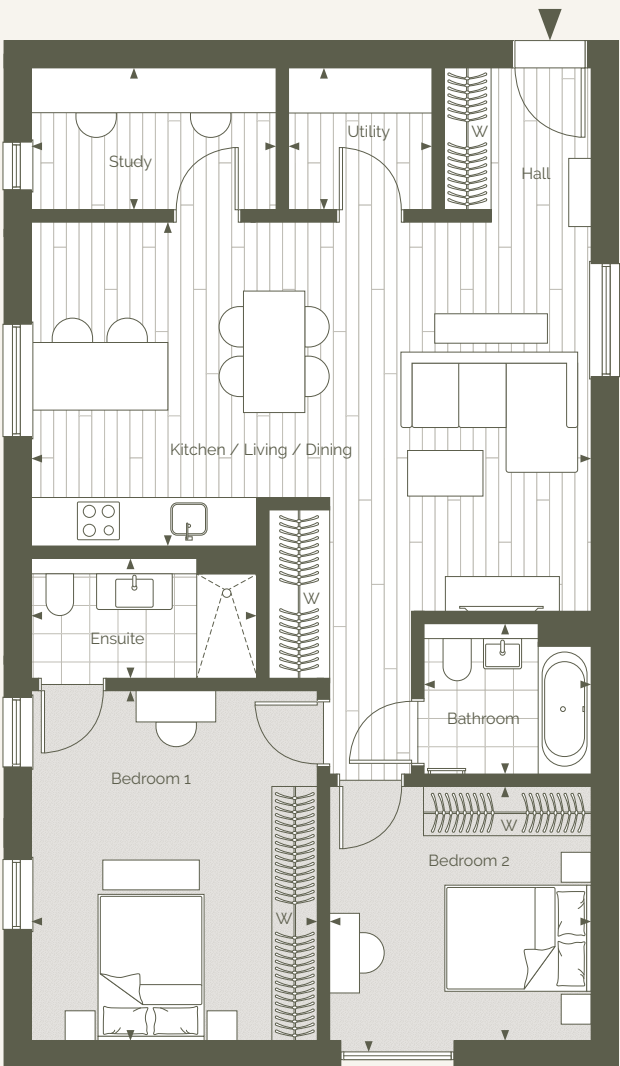
Block B Key Plans



Block B
Apartment 44

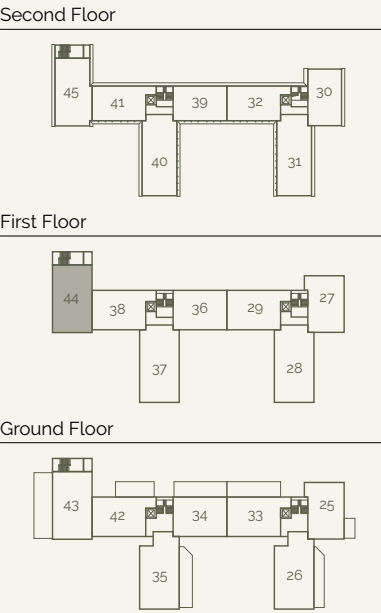
Two Bedrooms
First Floor

Total Area: 99 sq m 1066 sq ft



Room Dimensions		
Kitchen / Living / Dining	7.40m x 4.30m	24' 3" x 14' 1"
Bedroom 1	3.80m x 4.60m	12' 6" x 15' 1"
Bedroom 2	3.50m x 3.50m	11' 6" x 11' 6"
Study	3.30m x 1.90m	10' 10" x 6' 3"
Bathroom	2.20m x 2.00m	7' 3" x 6' 7"
Ensuite	3.00m x 1.60m	9' 10" x 5' 3"
Utility	1.90m x 1.90m	6' 3" x 6' 3"

Block A Key Plans

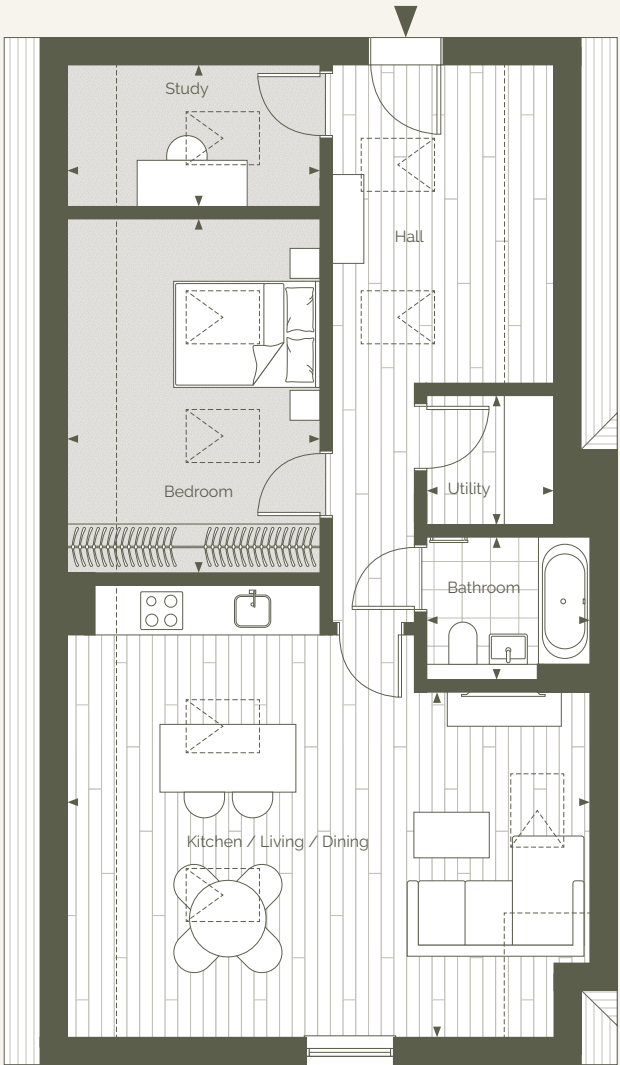


Block B

Apartment 45

One Bedroom
Second Floor

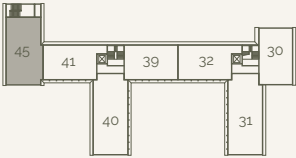
Total Area: 72 sq m 775 sq ft



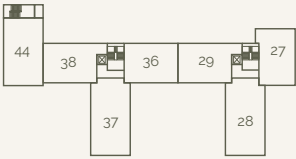
Room Dimensions		
Kitchen / Living / Dining	6.90m x 4.60m	22' 8" x 15' 1"
Bedroom	3.40m x 4.70m	11' 2" x 15' 5"
Study	3.40m x 1.90m	11' 2" x 6' 3"
Bathroom	2.20m x 1.90m	7' 3" x 6' 3"
Utility	1.70m x 1.70m	5' 7" x 5' 7"

Block B Key Plans

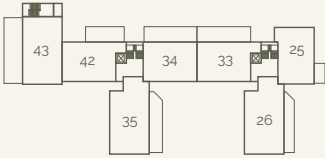
Second Floor



First Floor



Ground Floor



Take life in your stride



A Development by Coronado Property Developments and
Proceed Capital with interior design by Coronado Interiors.



coronado.co.uk



proseedcapital.co.uk



Contact

01372 743033
homes@cairds.co.uk
www.cairds.co.uk



01483 796810
guildfordnewhomes@savills.com

Disclaimer: While reasonable effort has been made to ensure the accuracy of this document and the information contained within, this cannot be guaranteed and no representation or warranty is made in that regard and all such representations and warranties (whether express, implied or otherwise) are excluded to the extent permitted by law. The specification included herein is the anticipated specification as at the date of this brochure being produced and is designed specifically as a guide and we reserve the right to amend the specification where necessary or desirable and without notice. Computer generated images are indicative of the quality and style of the development and are not intended to represent fully accurate depictions. Apartment and amenity designs, sizes, layouts and other details are indicative only and may be subject to change. Any areas, measurements or distances shown in any text or plan are indicative and for information purposes only and may be different once actually constructed. Any reference to use of the property does not mean that any necessary planning, building regulations or other consent has been obtained. Variances occur between apartment types. Please refer to the sales team for details of a particular apartment. Please note that the design of this development is ongoing and certain items of the specification may be amended to an item of equivalent quality without notice. Plans are not to scale. All measurements are approximate. All furniture and planting is shown for context only, not supplied with the apartment. Prices are subject to change without notice. Branding & Marketing by Shaka Studio. 